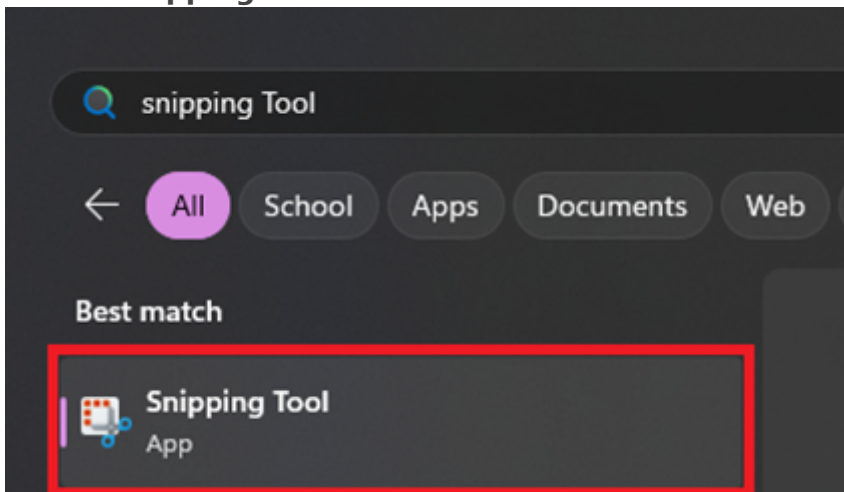
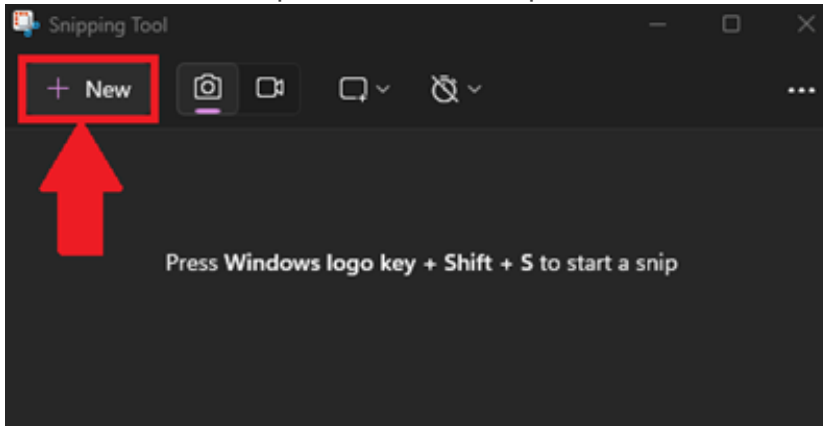


Screenshot

1. Launch **Snipping Tool** from the **Start Menu**

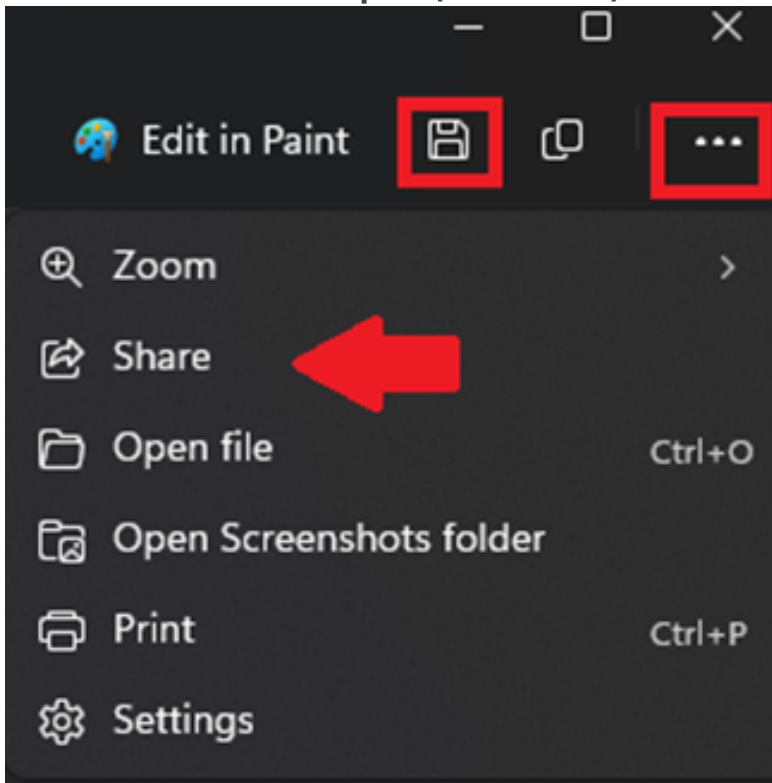


2. Click **New** in the top left-corner to capture a new screenshot



3. Highlight the area of the screen you want to capture
4. After capturing, Snipping Tool will display the screenshot in a new window

5. Use the **Save** icon or **ellipsis (three dots)** to save the screenshot



Revision #1

Created 2025-06-20 15:21:29 UTC by Jefferson Davis

Updated 2025-06-23 14:10:24 UTC by Jefferson Davis